



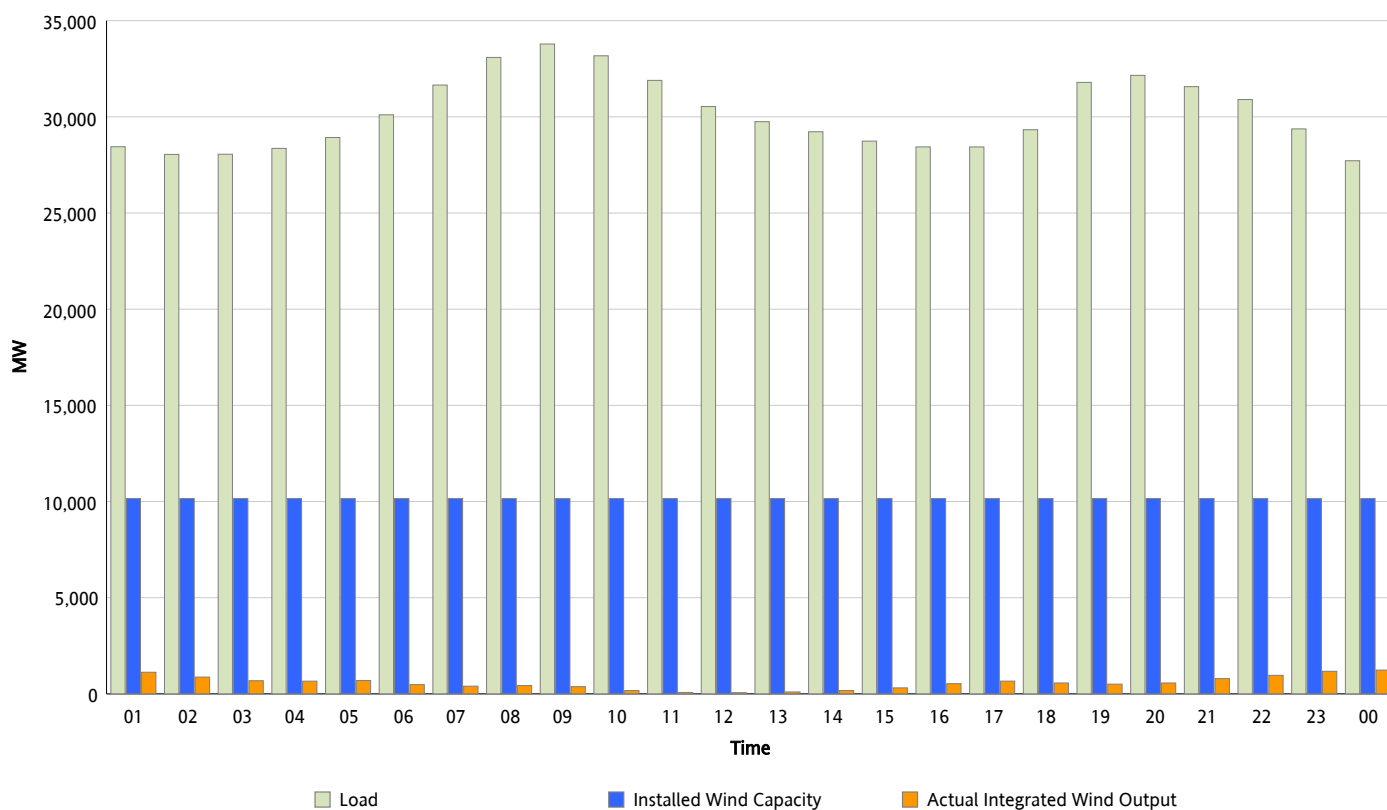
ERCOT Grid Operations

Wind Integration Report : 01/20/2013

Peak Load	33,788 MW
Load Peak Hour (HE)	09
Wind Over Peak	374 MW
Wind Record 12/25/12	8,638 MW
Max Wind Value*	1,309 MW
Wind Peak Time	00:00
Wind Integration %	4.54 %

Hourly Average Actual Load vs. Actual Wind Output

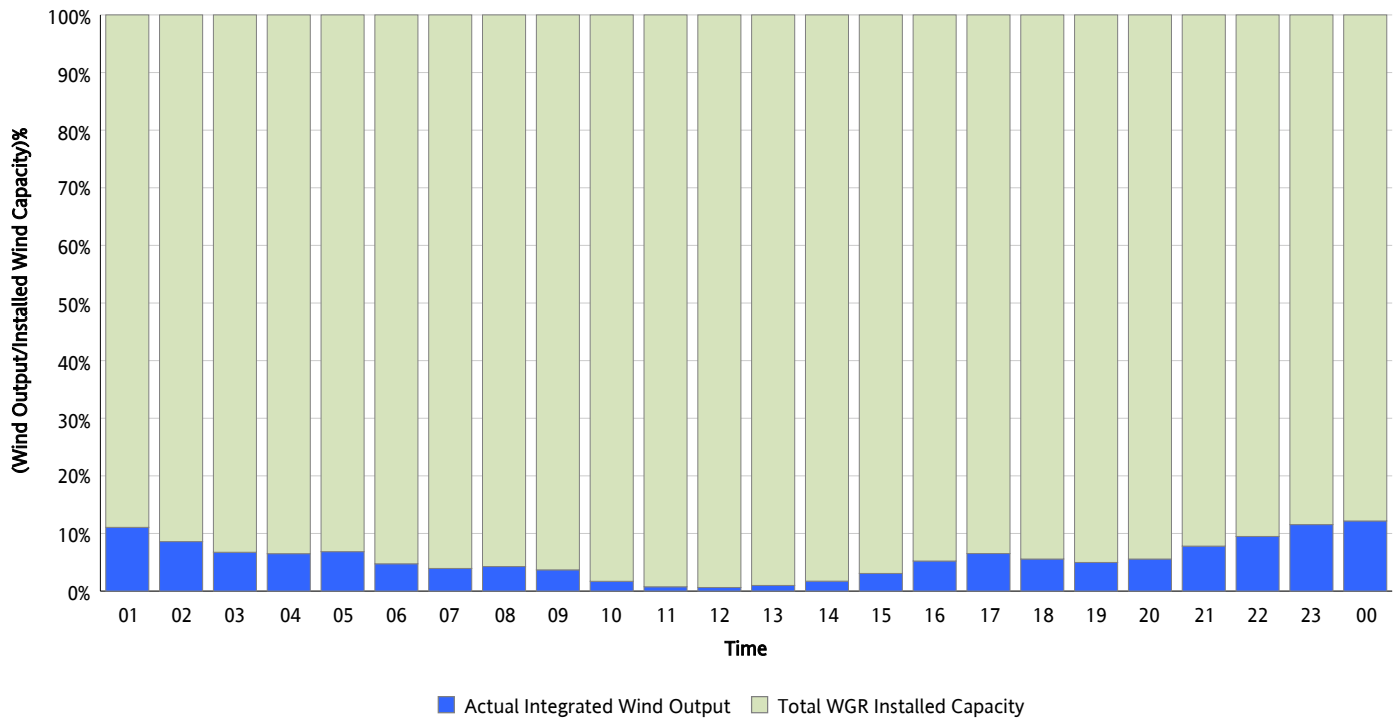
01/20/2013



* Wind Record and Wind Max represent instantaneous values and the rest of the values are integrated over the hour

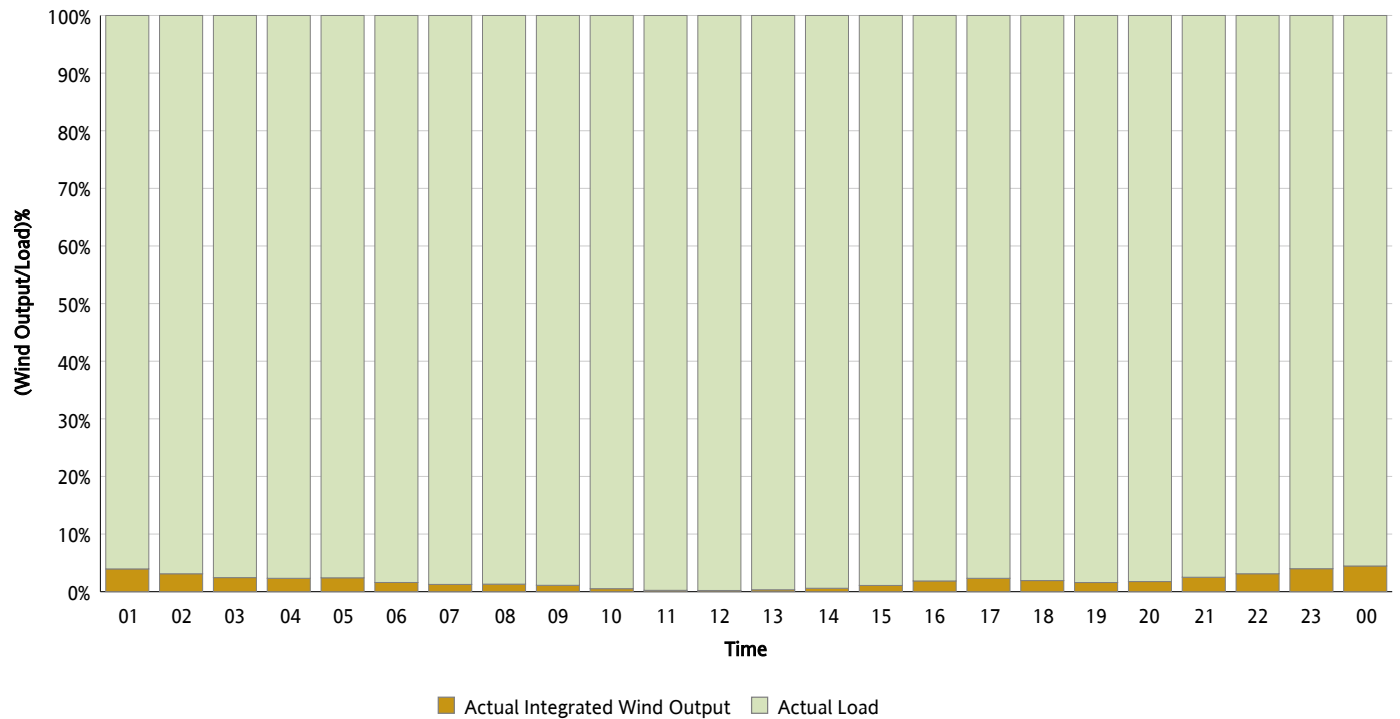
Actual Wind Output as a Percentage of the Total Installed Wind Capacity

01/20/2013



Actual Wind Output as a Percentage of the ERCOT Load

01/20/2013



ERCOT Load vs. Actual Wind Output

01/13/2013 - 01/20/2013

